

**Long-term impacts of facilitating  
temporary contracts:  
A comparative analysis of Italy and Spain using birth cohorts**

***Miguel Á. Malo***

***(University of Salamanca, Spain)***

***Dario Sciulli***

***(University of Chieti-Pescara, Italy)***

***Begoña Cueto***

***(University of Oviedo, Spain)***

***Piacenza (May 20<sup>th</sup>, 2015)***

# I. Motivation - Preliminaries

- Labour market reforms facilitating temporary contracts are reforms “at the margin”:
  - New entrants into the labour market (young people).
  - New hires in general (workers with higher job mobility,, as low skilled workers).
- Are there long-term impacts on employment, unemployment and employment ‘quality’?

# I. Motivation - Objective

- Our objective: evaluating the impact of this type of labour market reform at the margin **on the whole workers' career** in Italy (1997) and Spain (1984).
- Problem: Control group?
- Solution: Comparing the labour market history of generations entering into the labour market before and after the implementation of the legal reform.
  - Dependent variables:
    - Employment rates (ER)
    - Unemployment rates (UNER)
    - Temporary Employment Rates (TER)

# I. Motivation - Caveats

- Previous research on Spain using this research design:



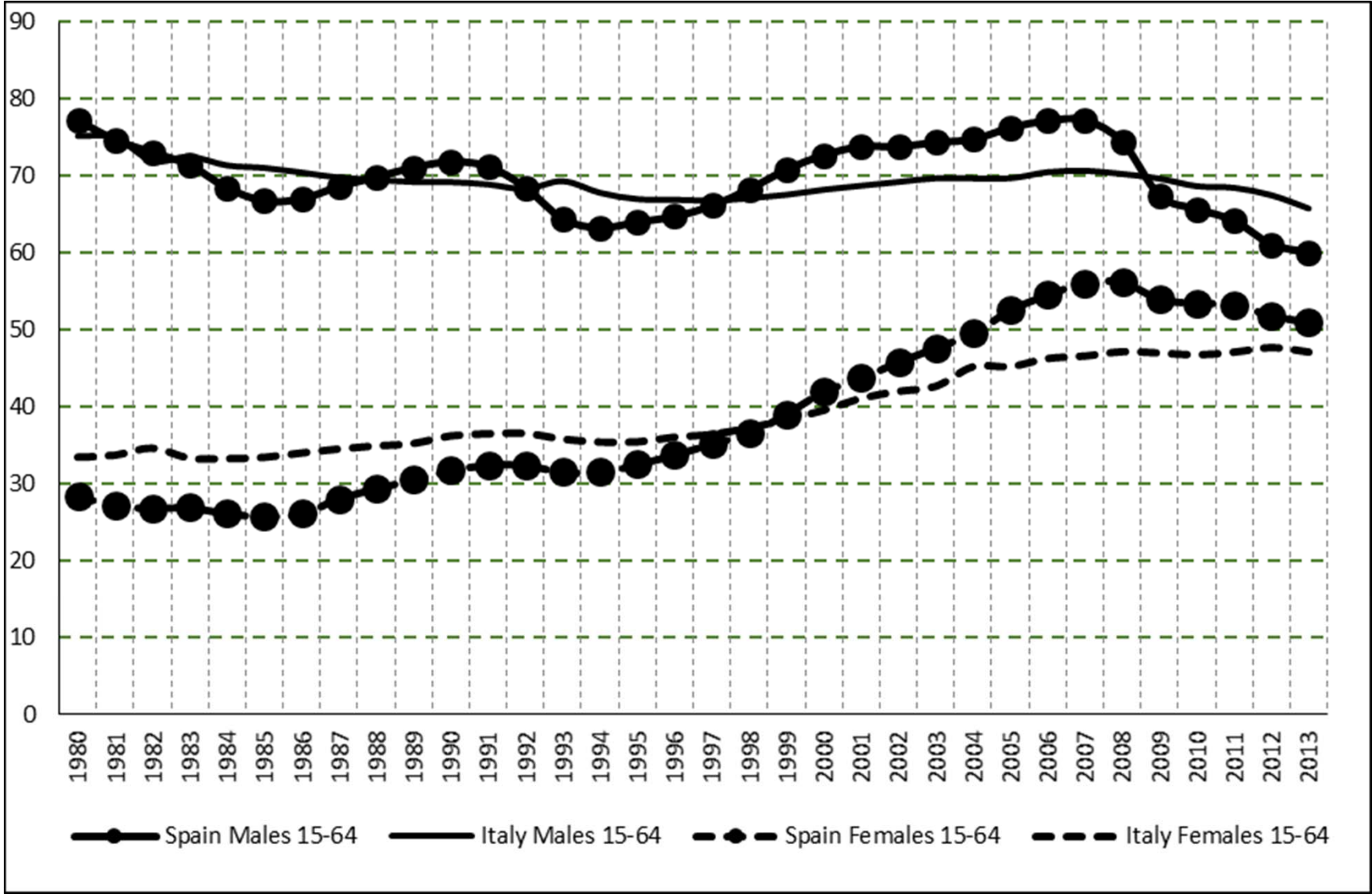
- Previous research using birth cohorts in Italy:
  - Bison, I., Rettore, E. and Schizzerotto (2010): “La riforma Treu e la mobilità contrattuale in Italia: un confront tra coorti”, chapter 9 in D. Checchi (ed.), *Immobilità diffusa: perché la mobilità intergenerazionale è così bassa in Italia*, Bologna: Il Mulino, 267-296. Link to the book:  
[http://www.lavoro.gov.it/Strumenti/StudiStatistiche/Documents/QRS21\\_immobilita\\_diffusa.pdf](http://www.lavoro.gov.it/Strumenti/StudiStatistiche/Documents/QRS21_immobilita_diffusa.pdf)

## II. Data

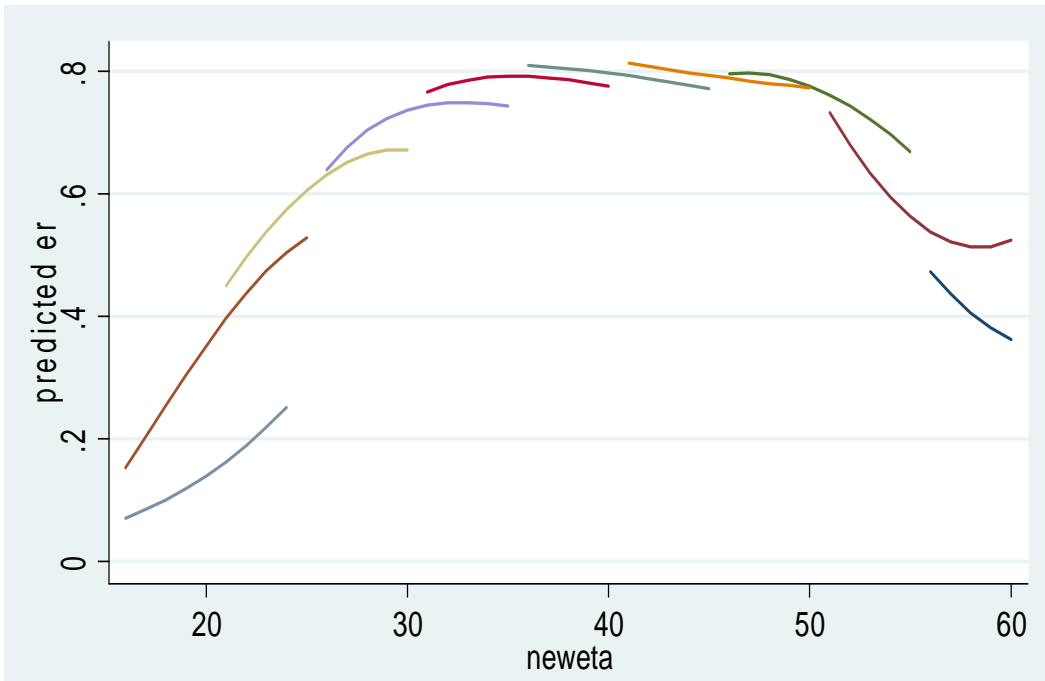
- Labour Force Survey: Italy 2004-2013; Spain 1977(1987)-2013
- We cannot follow individuals for so long, but we can define artificial cohorts. An example:

| <i>Birth year</i> | ... | LFS2000 | LFS2001 | LFS2002 | LFS2003 | ... |
|-------------------|-----|---------|---------|---------|---------|-----|
| ...               | ... | ...     | ...     | ...     | ...     | ... |
| <i>1980-84</i>    | ... | 16-20   | 17-21   | 18-22   | 19-23   | ... |
| <i>1985-89</i>    | ... | 21-25   | 22-26   | 23-27   | 24-28   | ... |
| <i>1990-94</i>    | ... | 26-30   | 27-31   | 28-32   | 29-33   | ... |
| etc.              | ... | etc.    | etc.    | etc.    | etc.    | ... |

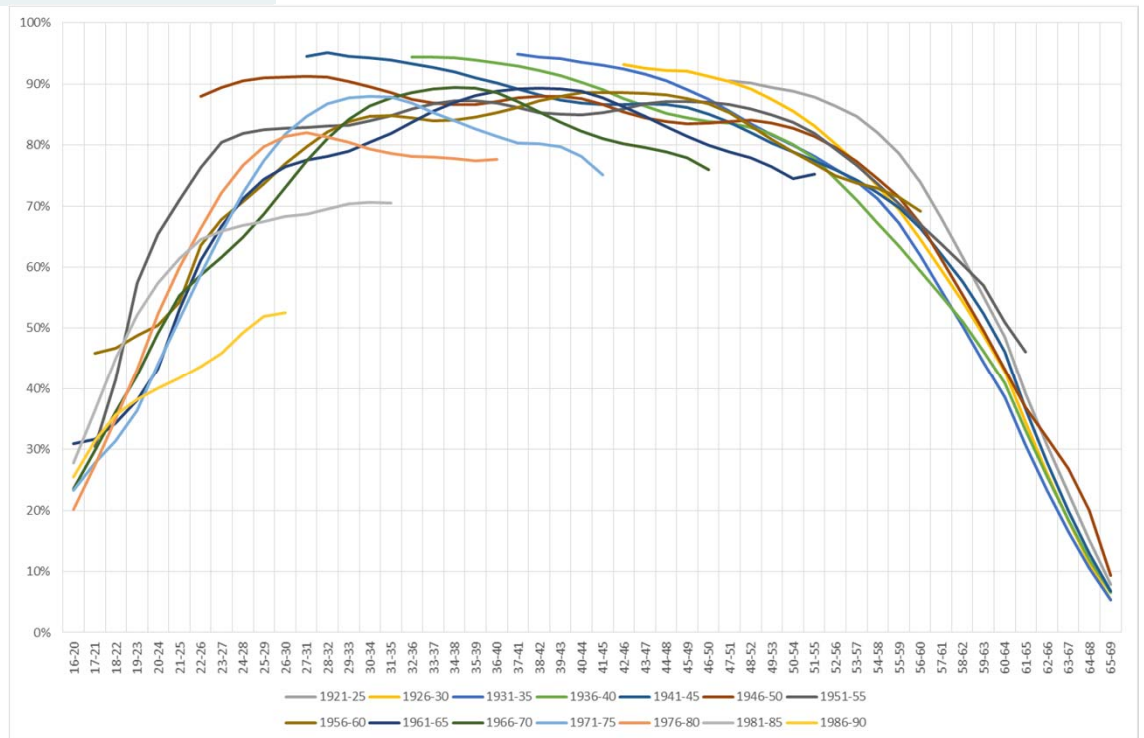
- As the LFS is based on a representative sample of the population we can follow birth-cohort groups (“generations”).

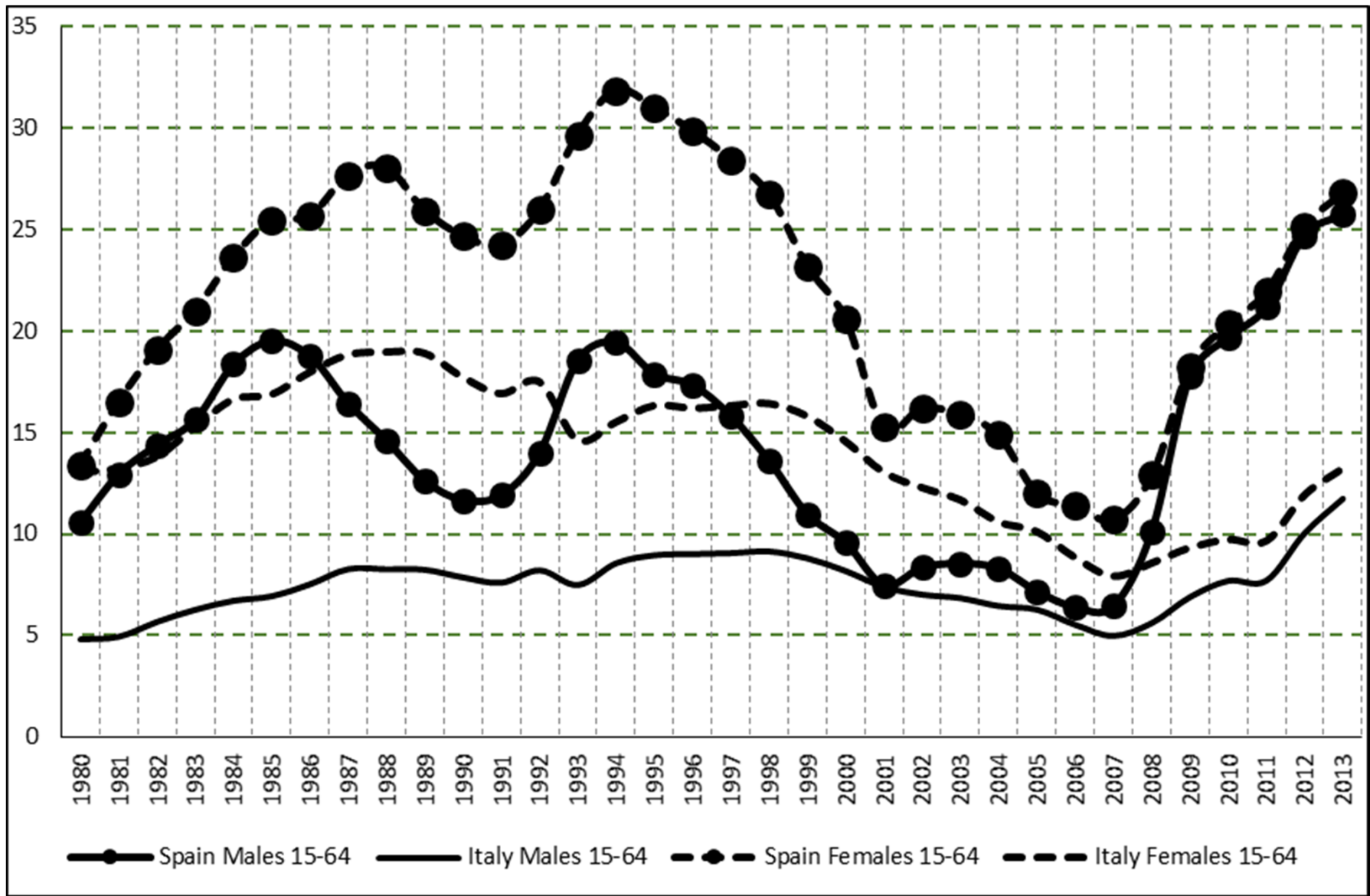


*Employment Rate (ER)*



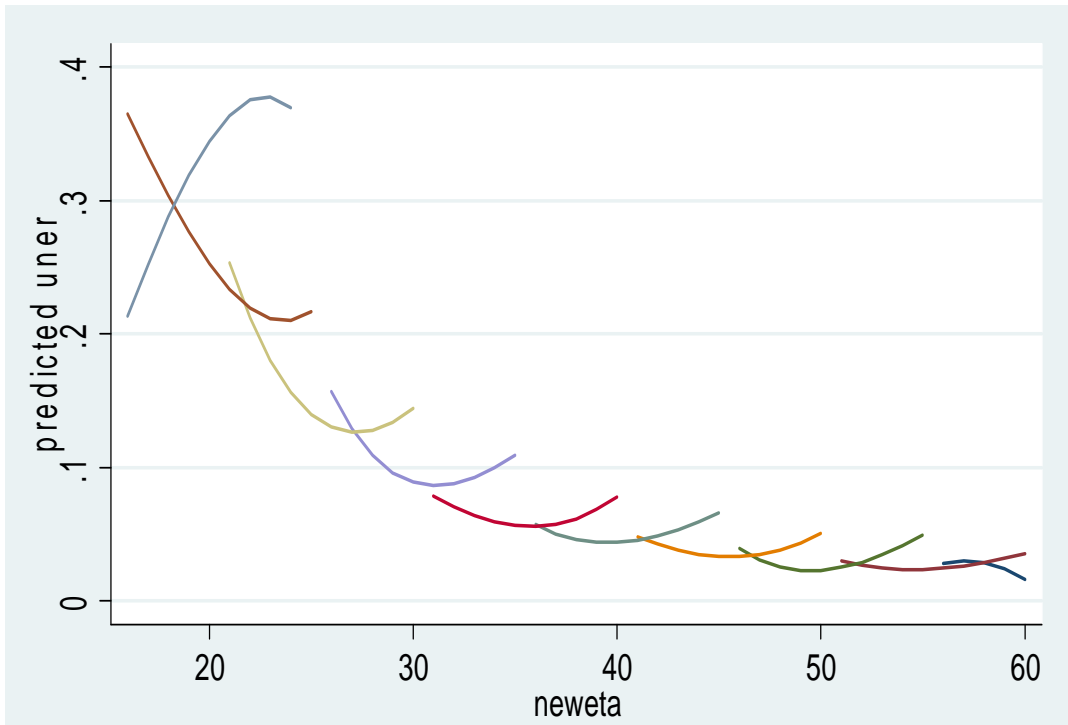
SPAIN (MALES)



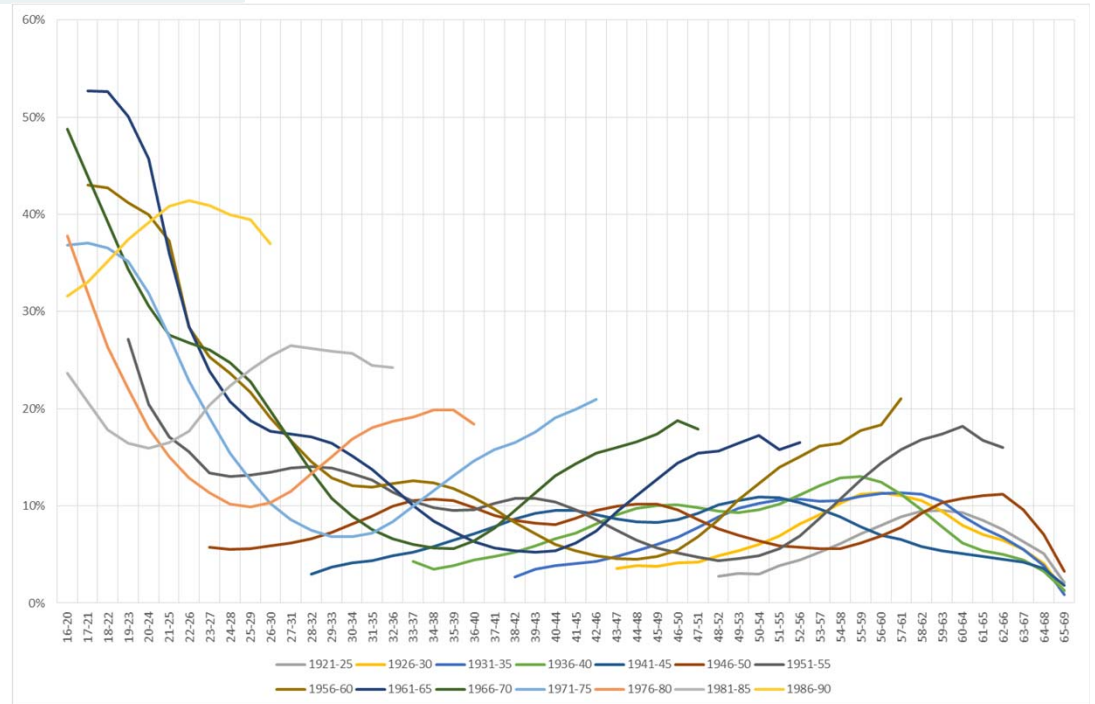


*Unemployment Rate (UNER)*

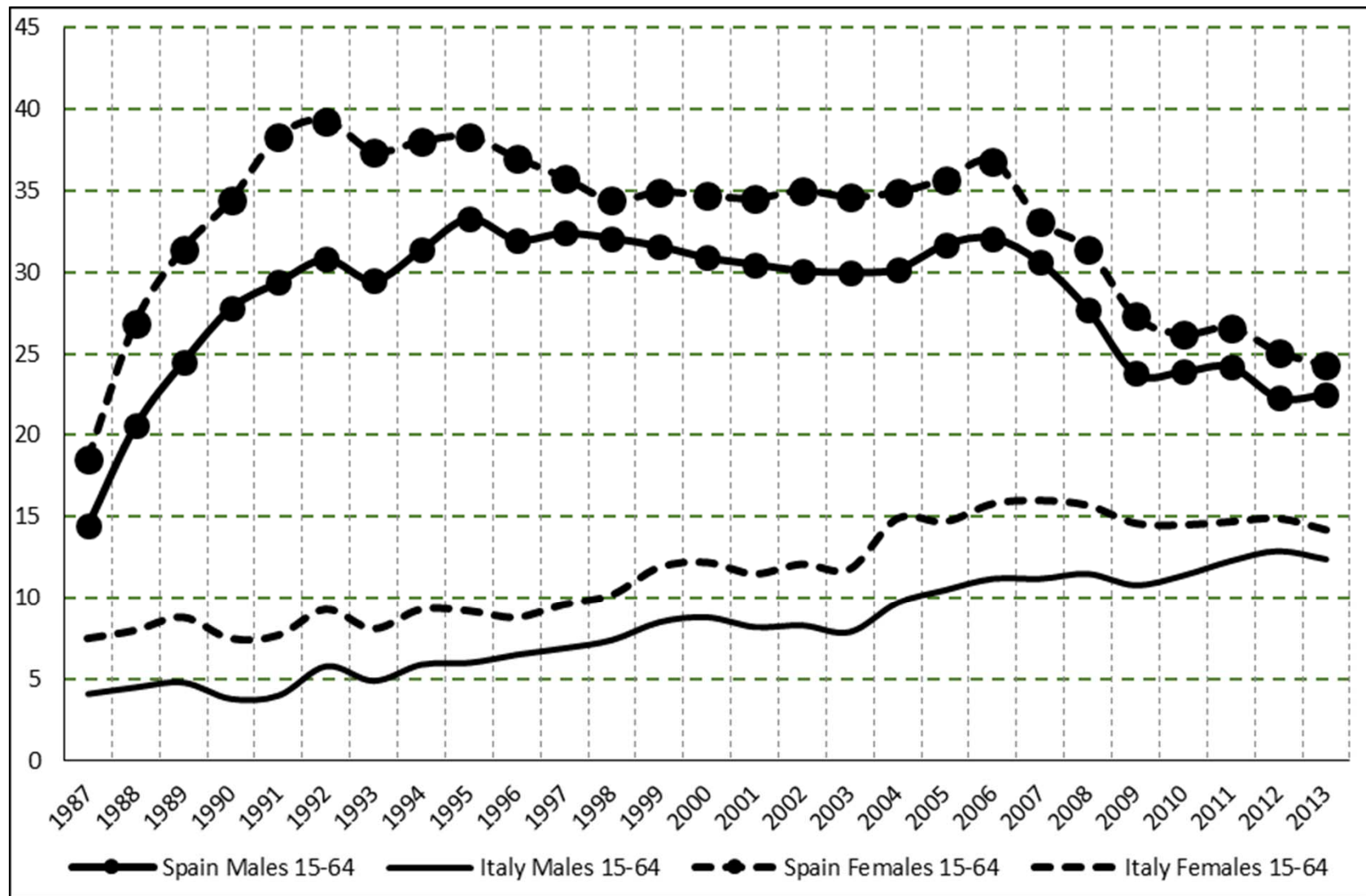




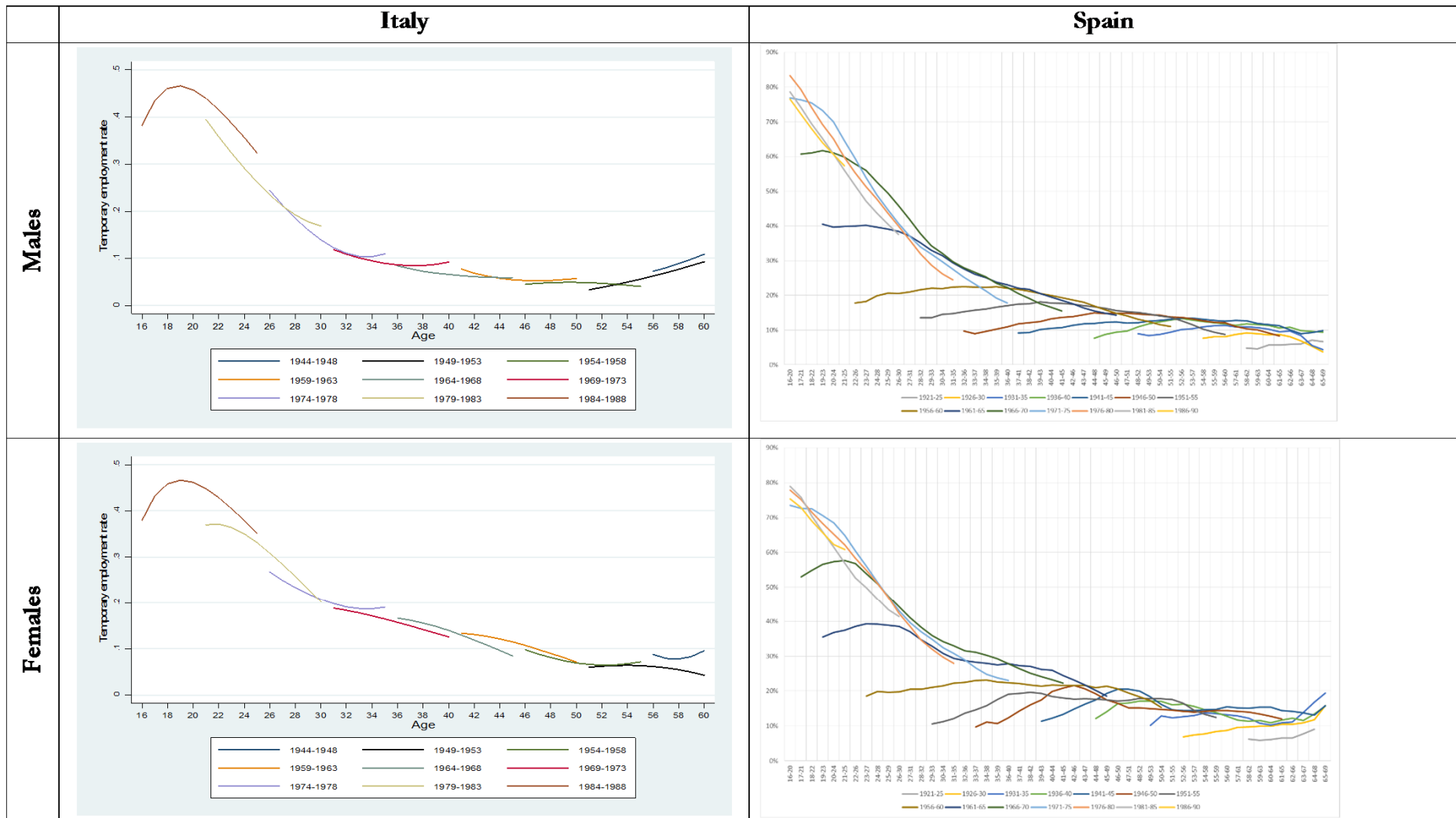
ITALY (ALL)



SPAIN (MALES)

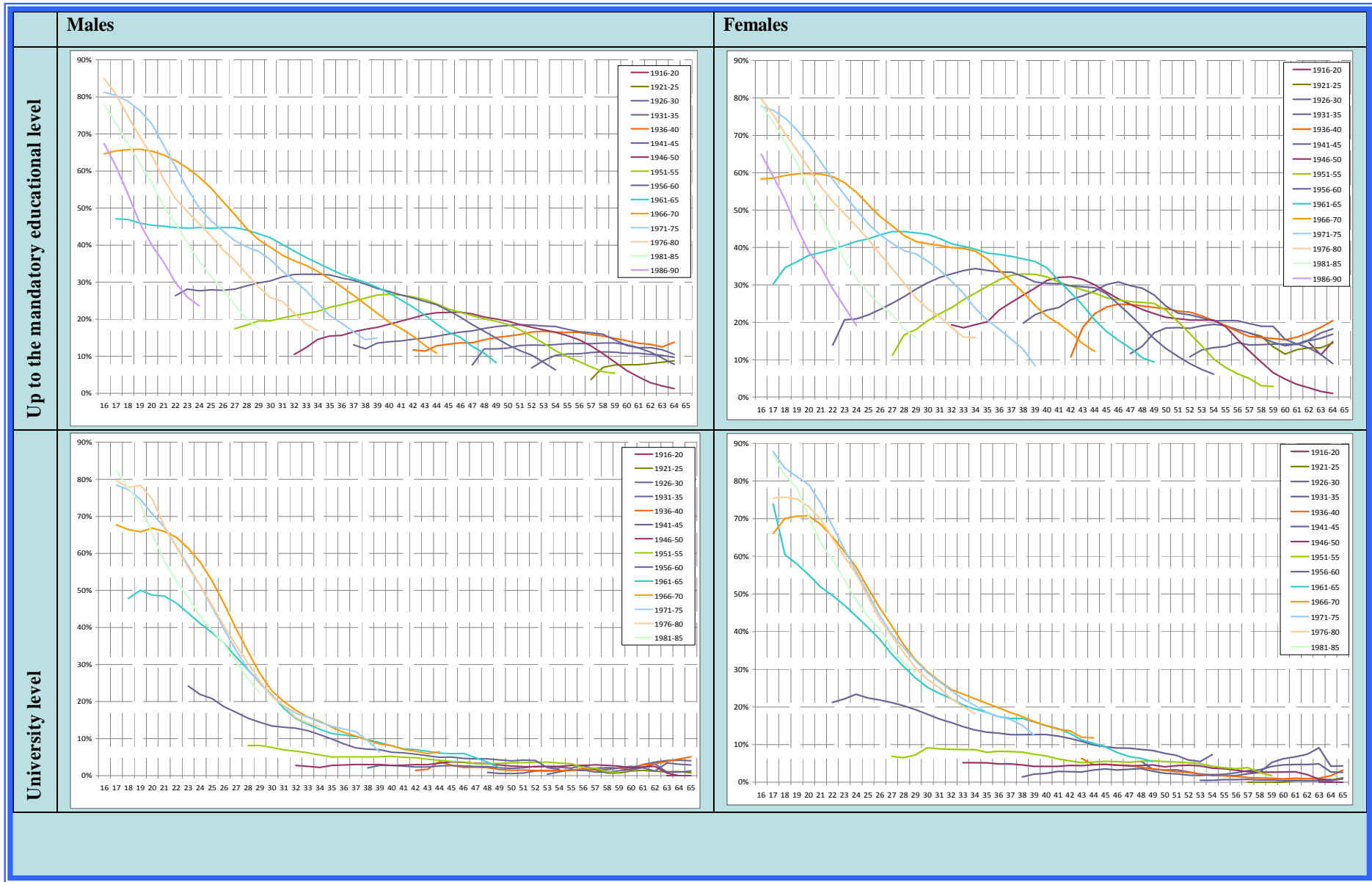


*Temporary Employment Rate (TER) =*  
*= Workers with a temporary contract / All wage and salary workers*



**Figure 6. Temporary Employment Rate in Spain and Italy, by birth cohort and gender. Source: Italian and Spanish Labor Force Survey and authors' calculations.**

# SPAIN



# III. Estimations

- Regression Discontinuity Design (RDD) [Lee & Lemieux (*Journal of Economic Literature* 2010)]
  - In the RDD, randomization is trivially satisfied if the discontinuity separating treated and non-treated groups (i) is really exogenous and (ii) agents do not systematically manipulate their assignment.
  - Randomization is only strictly guaranteed in the vicinities of the cut off → When choosing the bandwidth, there is a trade off with precision.

# III. Estimations

$$Y_{acjt} = \beta_1 \text{AgeCutoff}_{acjt} + \beta_2 \text{AgeCutoff}_{acjt} * \text{Age}_{acjt} + \beta_3 (1 - \text{AgeCutoff}_{acjt}) * \text{Age}_{acjt} + \alpha X'_{acj} + \varepsilon_{acjt}$$

- OLS regressions (by gender and by educational level) [Robust standard errors, clustered when possible by birth cohort]
- Dependent variable:  $Y_{acjt}$ 
  - Y: Temporary Employment Rate:
    - a: age group (groups of 5 years)
    - c: generation (9 birth cohorts for Italy; 12 birth-cohorts for Spain, defined as 5 years groups)
    - j: educational level (3)
    - t: year
- RHS variables:
  - AgeCutoff: 16, 19, 24 for Italy; 16, 18, 23 for Spain.
  - Age\*(1-AgeCutoff) & Age\*(AgeCutoff)
  - *Educational level:*
    - *Educ1: Up to mandatory educ. Level*
    - *Educ2: Secondary level*
    - *Educ3: University level*
  - Linear time trend
  - Step dummies of other labour market reforms: 2005 for Italy; 1994, 1997, 2006 for Spain.
- The 'main' coefficient is  $\beta_1$

**Table 1. Regression discontinuity on the employment rate (ER) in Italy and Spain (weighted data and clustered errors by birth cohort). Source: Labor Force Survey and authors' calculations.**

| ITALY           |            |            |            |           |            |           |            |            |           |           |           |            |
|-----------------|------------|------------|------------|-----------|------------|-----------|------------|------------|-----------|-----------|-----------|------------|
| MALES           | ALL        | EDUC LOW   | EDUC MED   | EDUC MED  | EDUC UNIV  | EDUC UNIV | EDUC UNIV  | EDUC UNIV  | EDUC UNIV | EDUC UNIV | EDUC UNIV | EDUC UNIV  |
| Cutoff 16       | -0.202     | -0.228 *   | -0.200 *   |           |            |           |            | -0.114     |           |           |           |            |
| Cutoff 19       |            |            |            |           | -0.125 *   |           |            | -0.099 *   |           |           |           |            |
| Cutoff 24       |            |            |            |           |            |           |            |            |           |           |           | 0.007      |
| Age*(1- Cutoff) | -0.003     | -0.009 *   | 0.001      |           | -0.005     |           | 0.006      | 0.001      |           |           |           | -0.003     |
| Age*(Cutoff)    | -0.049 *** | -0.059 *** | -0.040     |           | -0.046 *** |           | -0.073 *** | -0.057 *** |           |           |           | -0.046 *** |
| FEMALES         |            |            |            |           |            |           |            |            |           |           |           |            |
| ALL             | EDUC LOW   | EDUC MED   | EDUC MED   | EDUC UNIV | EDUC UNIV  | EDUC UNIV | EDUC UNIV  | EDUC UNIV  | EDUC UNIV | EDUC UNIV | EDUC UNIV | EDUC UNIV  |
| Cutoff 16       | -0.182     | -0.154 *   | -0.176 **  |           |            |           | -0.074     |            |           |           |           |            |
| Cutoff 19       |            |            |            |           | -0.073     |           |            | -0.079     |           |           |           |            |
| Cutoff 24       |            |            |            |           |            |           |            |            |           |           |           | 0.000      |
| Age*(1- Cutoff) | -0.003     | -0.008 *** | -0.001     |           | -0.005     |           | 0.005      | 0.000      |           |           |           | -0.004     |
| Age*(Cutoff)    | -0.029 *** | -0.032 *** | -0.033 *** |           | -0.041 *** |           | -0.061 *** | -0.048 *** |           |           |           | -0.039 *** |
| SPAIN           |            |            |            |           |            |           |            |            |           |           |           |            |
| MALES           | ALL        | EDUC LOW   | EDUC MED   | EDUC MED  | EDUC UNIV  | EDUC UNIV | EDUC UNIV  | EDUC UNIV  | EDUC UNIV | EDUC UNIV | EDUC UNIV | EDUC UNIV  |
| Cutoff 16       | -0.010     | -0.010     | 0.007      |           |            |           | 0.003      |            |           |           |           |            |
| Cutoff 18       |            |            |            |           | 0.006      |           |            | 0.004      |           |           |           |            |
| Cutoff 23       |            |            |            |           |            |           |            |            |           |           |           | 0.001      |
| Age*(1- Cutoff) | -0.002     | -0.004 **  | 0.000      |           | 0.000      |           | 0.004 **   | 0.004 **   |           |           |           | 0.004 **   |
| Age*(Cutoff)    | -0.006 **  | -0.003     | -0.008 *** |           | -0.007 *** |           | -0.010 *** | -0.009 *** |           |           |           | -0.008 *** |
| FEMALES         |            |            |            |           |            |           |            |            |           |           |           |            |
| ALL             | EDUC LOW   | EDUC MED   | EDUC MED   | EDUC UNIV | EDUC UNIV  | EDUC UNIV | EDUC UNIV  | EDUC UNIV  | EDUC UNIV | EDUC UNIV | EDUC UNIV | EDUC UNIV  |
| Cutoff 16       | -0.005     | 0.015      | -0.005     |           |            |           | -0.029     |            |           |           |           |            |
| Cutoff 18       |            |            |            |           | -0.008     |           |            | -0.030     |           |           |           |            |
| Cutoff 23       |            |            |            |           |            |           |            |            |           |           |           | -0.030 *   |
| Age*(1- Cutoff) | -0.004 *** | -0.005 *** | -0.005 *** |           | -0.006 *** |           | 0.001      | 0.000      |           |           |           | -0.001     |
| Age*(Cutoff)    | 0.000      | 0.006 ***  | 0.002      |           | 0.003      |           | -0.005 *   | -0.004 *   |           |           |           | -0.004 *** |

Spain: 14 clusters.

Italy: 10 clusters.

All estimations include a linear time trend, step dummies for additional labor market reforms (2005 and 2013 for Italy, 1994, 1997 and 2006 for Spain), and a set of dummies for educational levels in estimations for all individuals (first column estimations).

\*\*\* Statistically different from zero at the 1% level or better, \*\* at the 5% level or better and \* at the 10% level or better.

**Table 2. Regression discontinuity on the unemployment rate (UNER) in Italy and Spain (weighted data and clustered errors by birth cohort). Source: Labor Force Survey and authors' calculations.**

| ITALY           |          |          |          |           |           |           |           |           |           |           |           |           |           |     |
|-----------------|----------|----------|----------|-----------|-----------|-----------|-----------|-----------|-----------|-----------|-----------|-----------|-----------|-----|
| MALES           | ALL      | EDUC LOW | EDUC MED | EDUC MED  | EDUC UNIV | EDUC UNIV | EDUC UNIV | EDUC UNIV | EDUC UNIV | EDUC UNIV | EDUC UNIV | EDUC UNIV | EDUC UNIV |     |
| Cutoff 16       | -0.016   | -0.021   | -0.051   | **        |           |           | 0.037     |           |           |           |           |           |           |     |
| Cutoff 19       |          |          |          |           |           |           | -0.019    |           |           | 0.031     |           |           |           |     |
| Cutoff 24       |          |          |          |           |           |           |           |           |           |           |           | 0.021     | **        |     |
| Age*(1- Cutoff) | -0.003   | ***      | -0.003   | **        | -0.003    | ***       | -0.023    | ***       | -0.004    | ***       | -0.003    | **        | -0.001    | *** |
| Age*(Cutoff)    | 0.028    | ***      | 0.027    | ***       | 0.034     | ***       | 0.023     | ***       | 0.019     | ***       | 0.015     | ***       | 0.012     | *** |
| FEMALES         |          |          |          |           |           |           |           |           |           |           |           |           |           |     |
| ALL             | EDUC LOW | EDUC MED | EDUC MED | EDUC UNIV | EDUC UNIV | EDUC UNIV | EDUC UNIV | EDUC UNIV | EDUC UNIV | EDUC UNIV | EDUC UNIV | EDUC UNIV | EDUC UNIV |     |
| Cutoff 16       | -0.020   | -0.011   | -0.043   | *         |           |           | -0.036    |           |           |           |           |           |           |     |
| Cutoff 19       |          |          |          |           |           |           | -0.031    | *         |           | 0.014     |           |           |           |     |
| Cutoff 24       |          |          |          |           |           |           |           |           |           |           |           | -0.001    |           |     |
| Age*(1- Cutoff) | -0.005   | ***      | -0.005   | ***       | -0.004    | ***       | -0.003    | ***       | -0.005    | ***       | -0.004    | ***       | -0.002    | *** |
| Age*(Cutoff)    | 0.029    | ***      | 0.024    | ***       | 0.033     | ***       | 0.024     | ***       | 0.039     | ***       | 0.023     | ***       | 0.017     | *** |
| SPAIN           |          |          |          |           |           |           |           |           |           |           |           |           |           |     |
| MALES           | ALL      | EDUC LOW | EDUC MED | EDUC MED  | EDUC UNIV | EDUC UNIV | EDUC UNIV | EDUC UNIV | EDUC UNIV | EDUC UNIV | EDUC UNIV | EDUC UNIV | EDUC UNIV |     |
| Cutoff 16       | -0.011   | -0.014   | -0.017   |           |           |           | -0.002    |           |           |           |           |           |           |     |
| Cutoff 18       |          |          |          |           |           |           | -0.002    |           |           | 0.011     |           |           |           |     |
| Cutoff 23       |          |          |          |           |           |           |           |           |           |           |           | -0.019    |           |     |
| Age*(1- Cutoff) | -0.003   | ***      | -0.003   | ***       | -0.003    | ***       | 0.000     |           | -0.008    | ***       | -0.008    | ***       | -0.009    | *** |
| Age*(Cutoff)    | 0.007    | ***      | 0.009    | ***       | 0.008     | ***       | -0.008    | ***       | 0.007     | ***       | 0.007     | ***       | 0.008     | *** |
| FEMALES         |          |          |          |           |           |           |           |           |           |           |           |           |           |     |
| ALL             | EDUC LOW | EDUC MED | EDUC MED | EDUC UNIV | EDUC UNIV | EDUC UNIV | EDUC UNIV | EDUC UNIV | EDUC UNIV | EDUC UNIV | EDUC UNIV | EDUC UNIV | EDUC UNIV |     |
| Cutoff 16       | -0.025   | **       | -0.023   | *         | -0.021    | *         |           |           | -0.009    |           |           |           |           |     |
| Cutoff 18       |          |          |          |           |           |           | 0.007     |           |           | 0.015     |           |           |           |     |
| Cutoff 23       |          |          |          |           |           |           |           |           |           |           |           | 0.031     | **        |     |
| Age*(1- Cutoff) | -0.008   | ***      | -0.008   | ***       | -0.007    | ***       | -0.003    | **        | -0.012    | ***       | -0.012    | ***       | -0.012    | *** |
| Age*(Cutoff)    | 0.002    |          | 0.004    | *         | 0.002     |           | 0.001     |           | 0.006     | **        | 0.006     | **        | 0.007     | *** |

Spain: 14 clusters.

Italy: 10 clusters.

All estimations include a linear time trend, step dummies for additional labor market reforms (2005 and 2013 for Italy, 1994, 1997 and 2006 for Spain), and a set of dummies for educational levels in estimations for all individuals (first column estimations).

\*\*\* statistically different from zero at the 1% level or better, \*\* at the 5% level or better and \* at the 10% level or better.



**Table 3. Regression discontinuity on the temporary employment rate (TER) in Italy and Spain (weighted data and clustered errors by birth cohort). Source: Labor Force Survey and authors' calculations.**

| ITALY           |            |            |            |            |            |            |            |           |           |           |           |           |           |
|-----------------|------------|------------|------------|------------|------------|------------|------------|-----------|-----------|-----------|-----------|-----------|-----------|
| MALES           | ALL        | EDUC LOW   | EDUC MED   | EDUC MED   | EDUC UNIV  | EDUC UNIV  | EDUC UNIV  | EDUC UNIV | EDUC UNIV | EDUC UNIV | EDUC UNIV | EDUC UNIV | EDUC UNIV |
| Cutoff 16       | 0.072      | 0.043 **   | 0.003      |            |            |            |            | -0.005    |           |           |           |           |           |
| Cutoff 19       |            |            |            |            |            |            |            | -0.013    |           |           | 0.052     |           |           |
| Cutoff 24       |            |            |            |            |            |            |            |           |           |           |           |           | -0.018    |
| Age*(1- Cutoff) | -0.004 **  | -0.001     | -0.005 **  | -0.002 *** | -0.011 *** | -0.008 *** | -0.005 *** |           |           |           |           |           |           |
| Age*(Cutoff)    | 0.033 ***  | 0.030 ***  | 0.053 ***  | 0.044 ***  | 0.078 ***  | 0.052 ***  | 0.041 ***  |           |           |           |           |           |           |
| FEMALES         |            |            |            |            |            |            |            |           |           |           |           |           |           |
| MALES           | ALL        | EDUC LOW   | EDUC MED   | EDUC MED   | EDUC UNIV  | EDUC UNIV  | EDUC UNIV  | EDUC UNIV | EDUC UNIV | EDUC UNIV | EDUC UNIV | EDUC UNIV | EDUC UNIV |
| Cutoff 16       | 0.085      | -0.004     | 0.102 **   |            |            |            |            | 0.022     |           |           |           |           |           |
| Cutoff 19       |            |            |            |            |            |            |            | -0.013    |           |           | 0.092 **  |           |           |
| Cutoff 24       |            |            |            |            |            |            |            |           |           |           |           |           | 0.025     |
| Age*(1- Cutoff) | -0.005 *** | -0.002 *** | -0.006 *** | -0.005 *** | -0.015 *** | -0.012 *** | -0.010 *** |           |           |           |           |           |           |
| Age*(Cutoff)    | 0.024 ***  | 0.026 ***  | 0.035 ***  | 0.041 ***  | 0.034 *    | 0.024 ***  | 0.028 ***  |           |           |           |           |           |           |
| SPAIN           |            |            |            |            |            |            |            |           |           |           |           |           |           |
| MALES           | ALL        | EDUC LOW   | EDUC MED   | EDUC MED   | EDUC UNIV  | EDUC UNIV  | EDUC UNIV  | EDUC UNIV | EDUC UNIV | EDUC UNIV | EDUC UNIV | EDUC UNIV | EDUC UNIV |
| Cutoff 16       | 0.019      | 0.011      | 0.026      |            |            |            |            | 0.045 **  |           |           |           |           |           |
| Cutoff 18       |            |            |            |            |            |            |            | 0.031     |           |           | 0.031     |           |           |
| Cutoff 23       |            |            |            |            |            |            |            |           |           |           |           |           | 0.021     |
| Age*(1- Cutoff) | -0.011 *** | -0.010 *** | -0.012 *** | -0.012 *** | -0.011 *** | -0.010 *** | -0.008 *** |           |           |           |           |           |           |
| Age*(Cutoff)    | 0.012 ***  | 0.005 ***  | 0.014 ***  | 0.014 ***  | 0.026 ***  | 0.025 ***  | 0.023 ***  |           |           |           |           |           |           |
| FEMALES         |            |            |            |            |            |            |            |           |           |           |           |           |           |
| MALES           | ALL        | EDUC LOW   | EDUC MED   | EDUC MED   | EDUC UNIV  | EDUC UNIV  | EDUC UNIV  | EDUC UNIV | EDUC UNIV | EDUC UNIV | EDUC UNIV | EDUC UNIV | EDUC UNIV |
| Cutoff 16       | 0.026      | 0.046 *    | 0.004      |            |            |            |            | 0.018     |           |           |           |           |           |
| Cutoff 18       |            |            |            |            |            |            |            | 0.021 **  |           |           | 0.027     |           |           |
| Cutoff 23       |            |            |            |            |            |            |            |           |           |           |           |           | 0.026 *   |
| Age*(1- Cutoff) | -0.010 *** | -0.008 *** | -0.011 *** | -0.011 *** | -0.013 *** | -0.012 *** | -0.010 *** |           |           |           |           |           |           |
| Age*(Cutoff)    | 0.012 ***  | 0.001 **   | 0.009 ***  | 0.009 ***  | 0.020 ***  | 0.019 ***  | 0.019 ***  |           |           |           |           |           |           |

Spain: 14 clusters.


Italy: 10 clusters.

All estimations include a linear time trend, step dummies for additional labor market reforms (2005 and 2013 for Italy, 1994, 1997 and 2006 for Spain), and a set of dummies for educational levels in estimations for all individuals (first column estimations).

\*\*\* statistically different from zero at the 1% level or better, \*\* at the 5% level or better and \* at the 10% level or better.

# IV. Final summary of results

- **Long-term impacts:**

- (-)  – **On mean employment rates:** workers with low educational level in Italy ('large' impacts), and for Spanish women with university level.
- (+)  – **On mean unemployment rates:** male workers with university education and female workers with secondary level in Italy, and women with low educational level in Spain.
- (-)  – **On mean temporary employment rates:** male workers with low educational level in Italy, and female workers irrespective of their educational level in Spain.

**Thank you very much!**

**malo@usal.es**

*Piacenza (May 20<sup>th</sup>, 2014)*